

INSTRUCTION SHEET FOR THE MODEL 580 PULSER KIT

This instruction sheet details the steps to install a pulser kit into an existing 580 pump. Be sure to follow all Warnings and Safeguards as outlined in your *580 Installation/Operation/Parts* manual. To install the new pulser kit, you must remove the existing register and install the new pulser-enabled register and some additional parts. To make this process easier, many of these parts are preassembled for you. This kit contains the following:

Register cable assembly

*048654 Register

*023089 Cable

Pulser/bracket assembly

*021788 Pulser

*015919 Pulser bracket

*025045 90° elbow

*014031 conduit

*066400 conduit union

Junction Box and cover assembly

*003340 junction box

*003515 junction box cover

053910 screw

023074 junction box bracket

042290 cotter pin

052976 ground screw

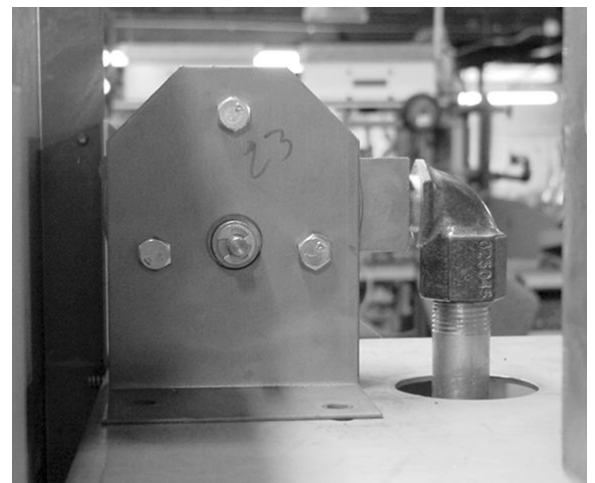
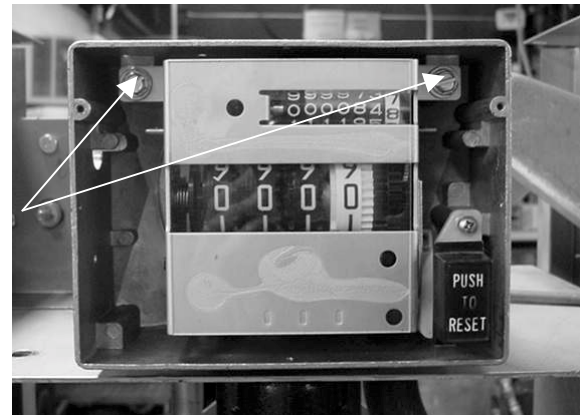
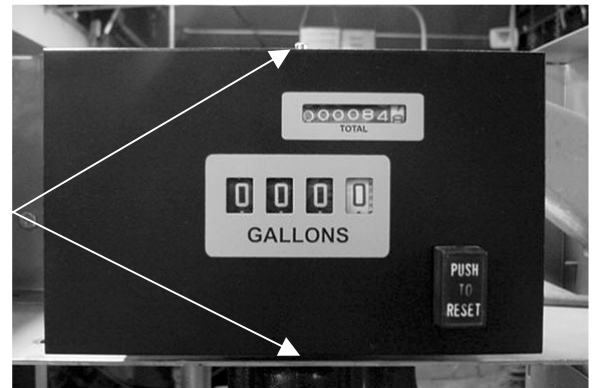
067500 cupped washer

064874 ring terminal

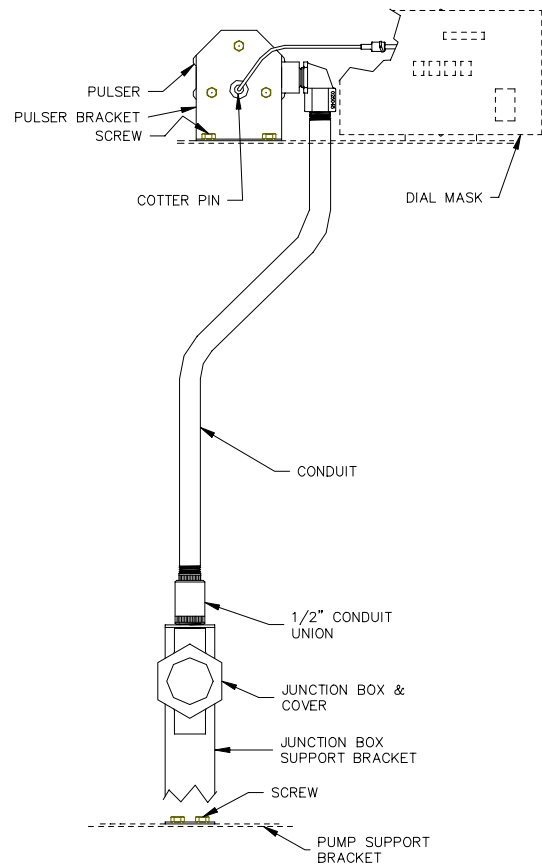
023132 instruction sheet

*Components are pre-assembled to form assembly shown in bold print.

1. Remove the dial mask from the register housing by removing two screws on the top and bottom. See Figure 1. Keep these screws; you will use them later.
2. Remove the **PUSH TO RESET** button and the spring, and set aside.
3. Remove two screws (Figure 2) that hold the register assembly to the register housing. Slide register assembly to the left and lift out.
4. Install the new register assembly with pulser cable. Extend the pulser cable outside the housing from the hole located on the left side of the housing.
5. Replace the reset button and the spring removed in Step 2, then use the two screws to re-secure the dial mask to the register housing.
6. Install pulser/bracket assembly, running conduit through provided hole in meter-register support plate (see Figure 3). Secure to the support plate using two thread forming screws.
7. Connect the pulser cable to the pulser shaft using the cotter pin.



8. Assemble conduit union, junction box bracket, junction box and cover as shown in Figures 4 and 5. Position the junction box support bracket on the pump support bracket and tighten the thread forming screws.



9. Figure 6 shows the completed assembly. For pulser wiring and conduit information, follow the recommended procedures in the *Series 580 Installation/Operation/Parts Manual*.